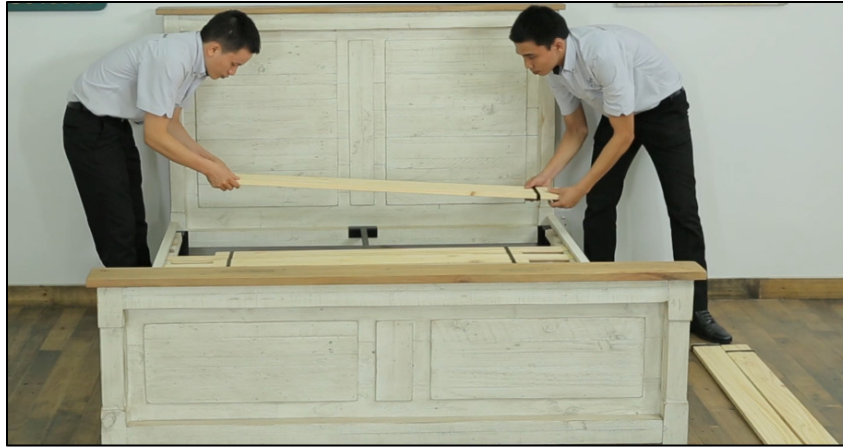
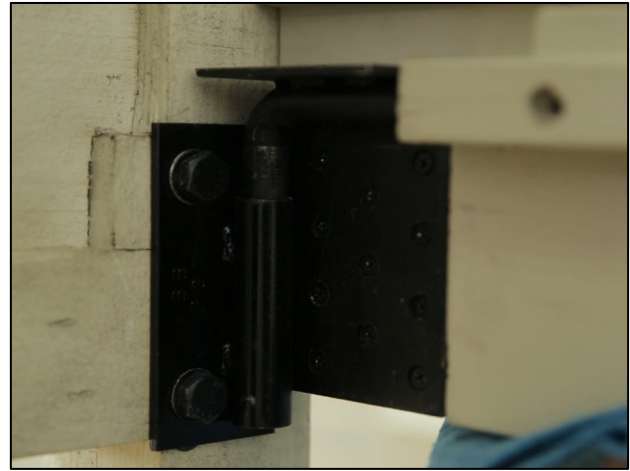


Disassemble QTA Bed ASSEMBLY INSTRUCTION

STEP 1: Remove the slats.



STEP 2: Remove the side rails by putting gentle pressure under each bracket.



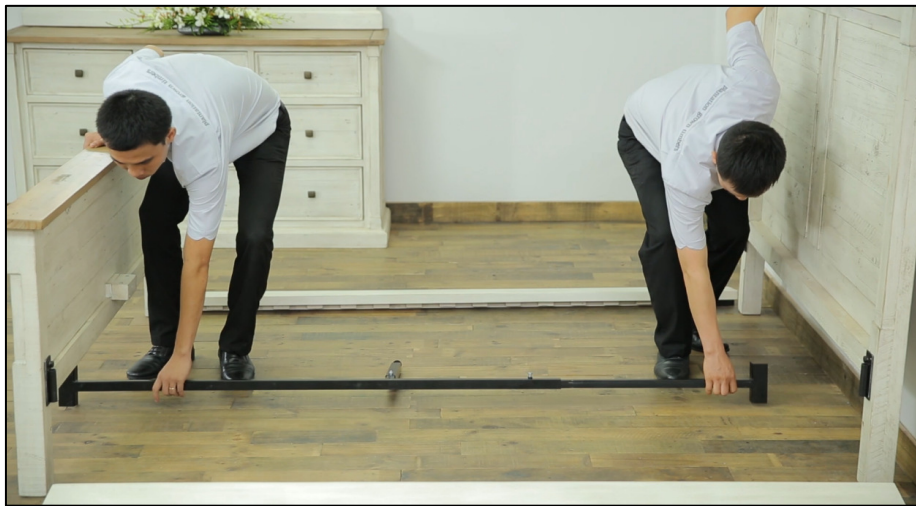
Then lift them out.



STEP 3: Lift out the center rail.



The disassembly is now completed.



Please carefully wrap the parts in blanket to prevent scratches and put the headboard and footboard against the wall to prevent falling.

Trust disassemble instruction is helpful to you when you move your bedroom to another location!

Enjoy our QTA bed for many years!